

SEE SHEET 3



NO.	DATE	REVISIONS
1	7-24-11	REVISED PER SNOHOMISH COUNTY
2	8-14-11	REVISED PER SNOHOMISH COUNTY
3	8-31-11	REVISED PER SNOHOMISH COUNTY

Project Management
Civil Engineering
Land Surveying
Environmental Analysis

TRIAD ASSOCIATES

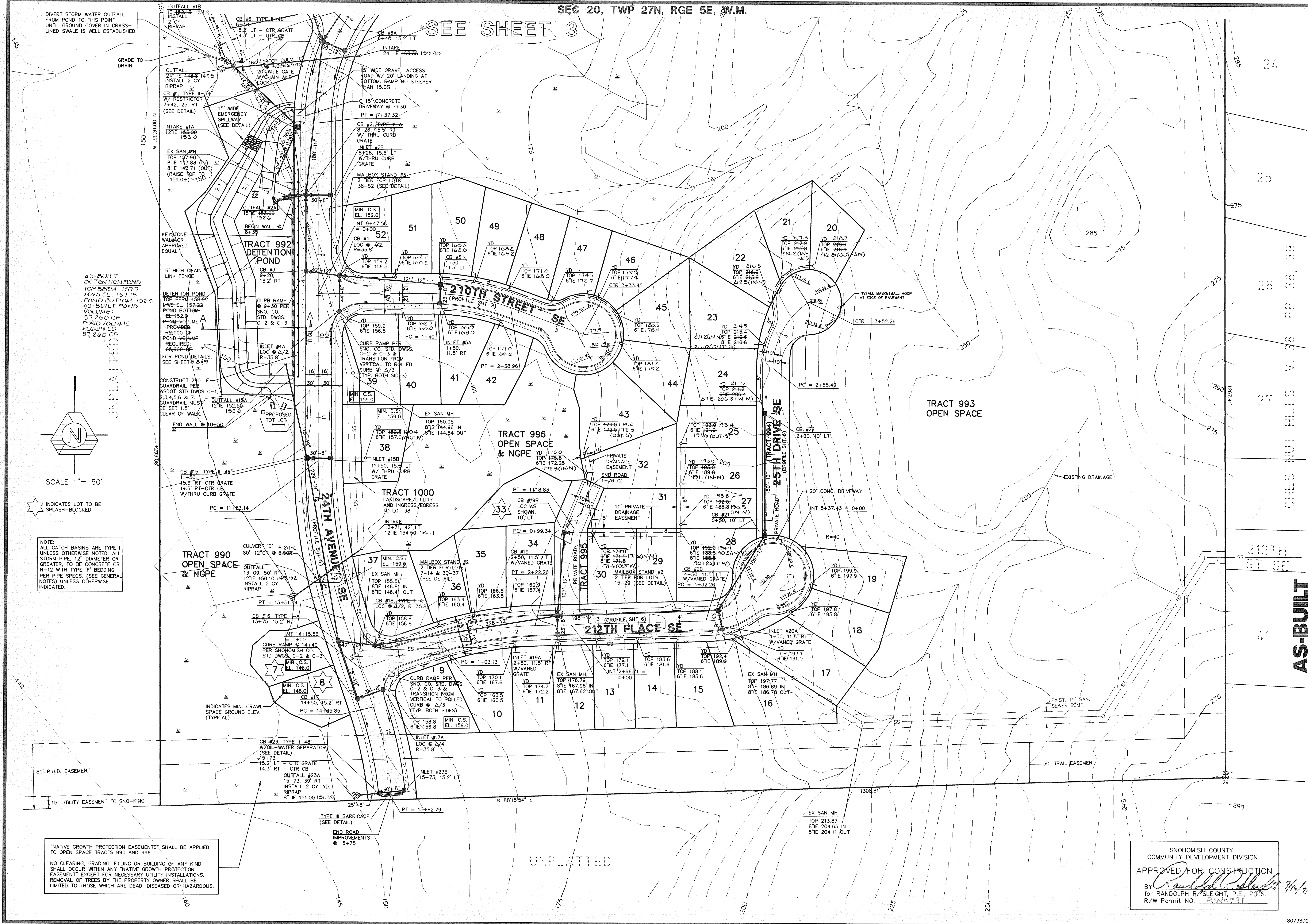
11415 NE 28th Street • Kirkland, WA 98034 • (206) 821-8448 • (206) 821-3481 FAX

ROAD AND STORM DRAINAGE PLAN
CHESTNUT GLEN
2A8707341 G91-189
SNOHOMISH COUNTY, WASHINGTON

DESIGNED BY	RM
DRAWN BY	RM
CHECKED BY	RM
DATE	MAY 29, 1991
PROJECT MANAGER	J. CRAIG SEARS

SHEET **4** OF **11**
JOB NUMBER **88-073**

SNOHOMISH COUNTY
COMMUNITY DEVELOPMENT DIVISION
APPROVED FOR CONSTRUCTION
BY: *Randolph R. Sleight*
for RANDOLPH R. SLEIGHT, P.E., P.T.S.
R/W Permit No. 311731



NOTE:
ALL CATCH BASINS ARE TYPE I
UNLESS OTHERWISE NOTED. ALL
STORM PIPE, 12" DIAMETER OR
GREATER, TO BE CONCRETE OR
N-12 WITH TYPE 'F' BEDDING
PER PIPE SPECS. (SEE GENERAL
NOTES) UNLESS OTHERWISE
INDICATED.

"NATIVE GROWTH PROTECTION EASEMENTS" SHALL BE APPLIED
TO OPEN SPACE TRACTS 990 AND 996.
NO CLEARING, GRADING, FILLING OR BUILDING OF ANY KIND
SHALL OCCUR WITHIN ANY "NATIVE GROWTH PROTECTION
EASEMENT" EXCEPT FOR NECESSARY UTILITY INSTALLATIONS.
REMOVAL OF TREES BY THE PROPERTY OWNER SHALL BE
LIMITED TO THOSE WHICH ARE DEAD, DISEASED OR HAZARDOUS.